

## I . SCOPE :

This specification applies to the Pb Free high current type SMD inductors for  
MSCDRI-1060ASH0-SERIES-□

Warn : This product series can't be used in synchronous rectification circuit that is over 24V.

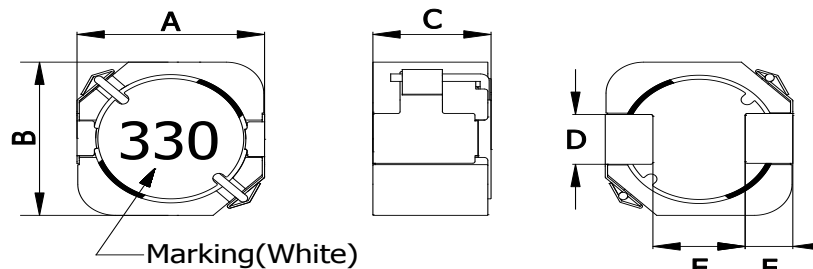
### PRODUCT IDENTIFICATION

MSCDRI - 1060AS H0 - 330 M -□

①                  ②                  ③                  ④                  ⑤                  ⑥

- ① Product Code
- ② Dimensions Code
- ③ AEC-Q200 Code
- ④ Inductance Code
- ⑤ Tolerance Code
- ⑥ Inner Control Code

## (1) SHAPES AND DIMENSIONS



A:	10.3 ± 0.3	mm
B:	10.0 ± 0.3	mm
C:	6.5 Max.	mm
D:	3.5 Typ.	mm
E:	4.5 Typ.	mm
F:	2.65 Typ.	mm

## (2) ELECTRICAL SPECIFICATIONS

SEE TABLE 1

### TEST INSTRUMENTS

L : HP 4284A PRECISION LCR METER (or equivalent)  
RDC : CHROMA MODEL 16502 MILLIOHMMETER (or equivalent)

## (3) CHARACTERISTICS

(3)-1 Operate temperature range ..... -50℃ ~ +150℃  
(Including self temp. rise)

Note: On customer side this product series need to be fixed by the glue after IR reflow.  
Please refer to below example photo:



Glue



MAG.LAYERS

**TABLE 1**

MAGLAYERS PT/NO.	Inductance L( $\mu$ H)	Percent Tolerance	Resistance RDC( $\Omega$ )	Rated DC Current			Marking
				Isat1(A)	Isat2(A)	Irms(A)	
MSCDRI-1060ASH0-100□-F	10	M,N	17 m Typ.	5.00	-	5.80	100
MSCDRI-1060ASH0-150□-H	15	M,N	27m $\pm$ 30%	-	3.40	3.10	150
MSCDRI-1060ASH0-220□-H	22	M,N	40m $\pm$ 30%	-	2.80	2.70	220
MSCDRI-1060ASH0-330□-F	33	M,N	61 m Max.	3.10	-	2.90	330
MSCDRI-1060ASH0-470□-F	47	M,N	74m $\pm$ 20%	2.35	-	2.60	470
MSCDRI-1060ASH0-101□-F	100	M,N	0.15 $\pm$ 20%	1.65	-	1.90	101
MSCDRI-1060ASH0-151□-F	150	M,N	0.24 $\pm$ 20%	1.35	-	1.50	151
MSCDRI-1060ASH0-221□-F	220	M,N	0.35 $\pm$ 20%	1.10	-	1.20	221

※ Test Frequency:100KHz/0.25V

※ □ specify the inductance tolerance,M( $\pm$ 20%),N( $\pm$ 30%)

※ Isat1 : Based on inductance change ( $\Delta$ L/Lo : drop 30% Typ.) @ambient temperature 25℃

Isat2 : Based on inductance change ( $\Delta$ L/Lo : drop 30% Max.) @ambient temperature 25℃

Irms : Based on temperature rise ( $\Delta$ T : 30℃ Typ.)

Rated DC Current : The less value which is Isat1~Isat2 or Irms.



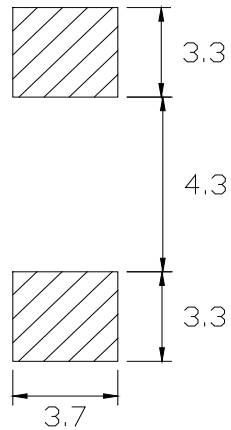
## (4) LAND DIMENSION (Ref.)

PCB: GLASS EPOXY  $t=1.6\text{mm}$

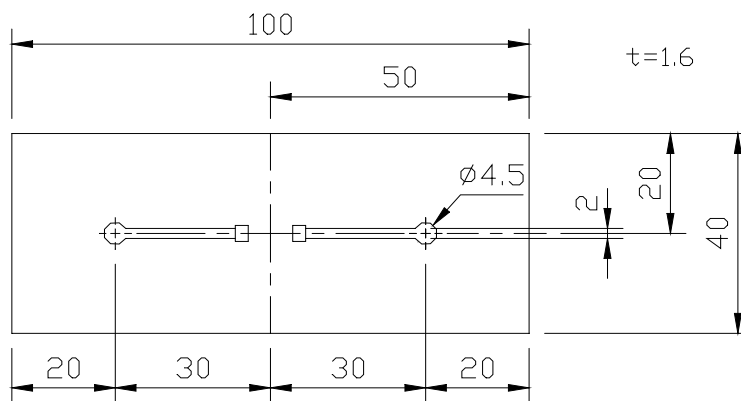
### (4)-1 LAND PATTERN DIMENSIONS

(STANDARD PATTERN)

Unit:mm



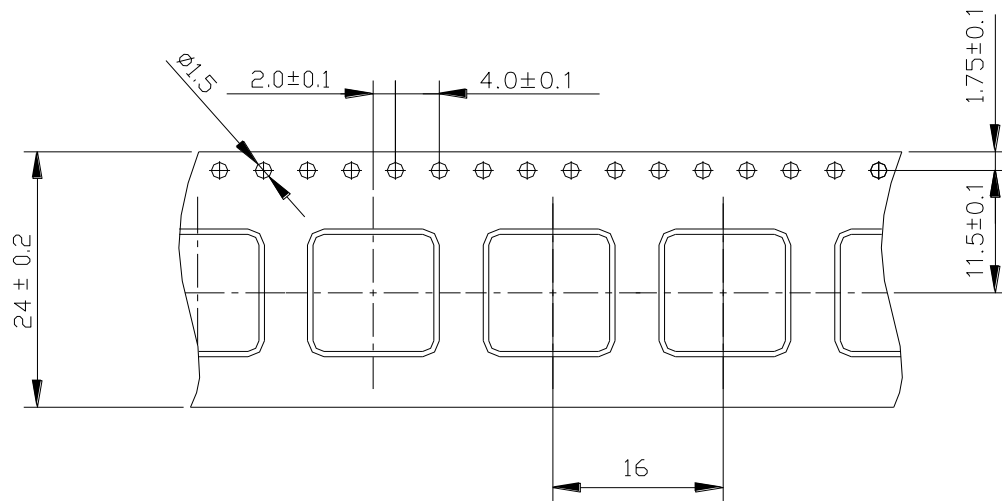
### (4)-2 SUBSTRATE BENDING TEST BENDING TEST BOARD



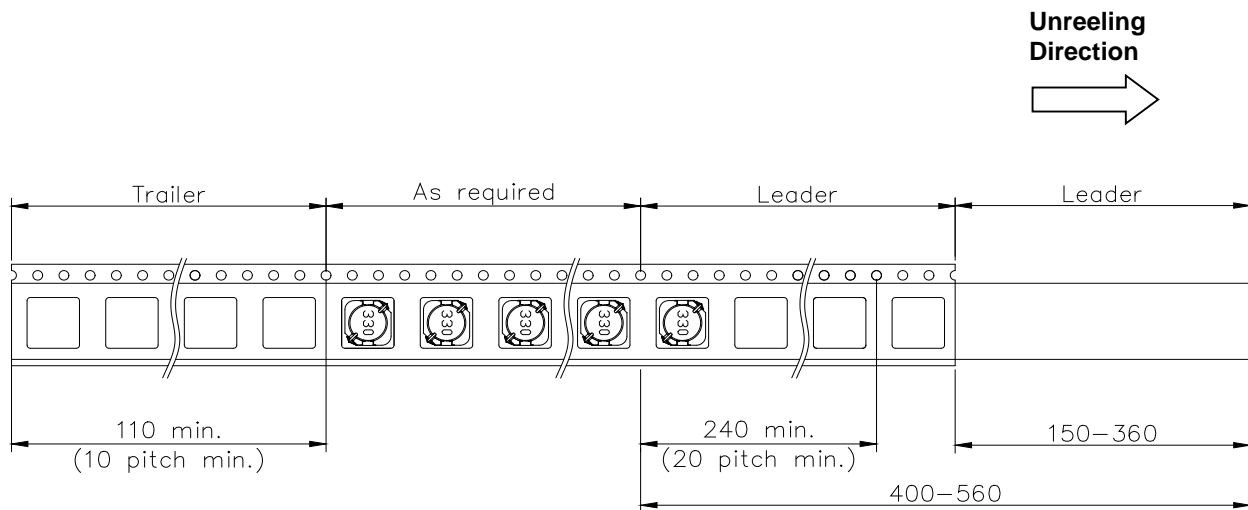
MAG.LAYERS

## (5) PACKAGING

### (5)-1 CARRIER TAPE DIMENSIONS (mm)

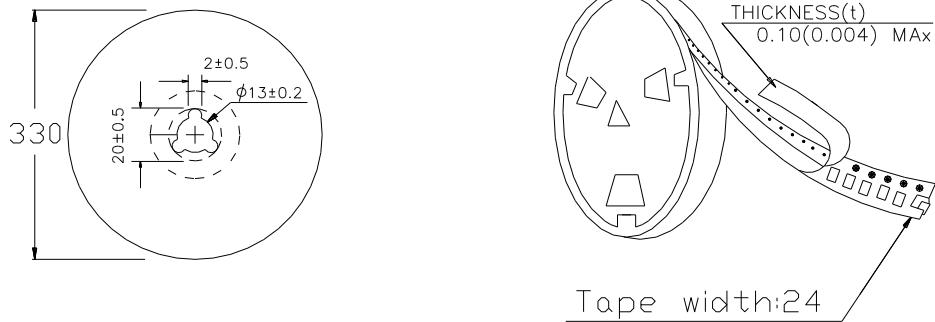


### (5)-2 TAPING DIMENSIONS (mm)



MAG.LAYERS

### (5)-3 REEL DIMENSIONS (mm)



### (5)-4 QUANTITY

500 pcs/Reel

The products are packaged so that no damage will be sustained.

Please note that the contents may change without any prior notice due to reasons such as upgrading.